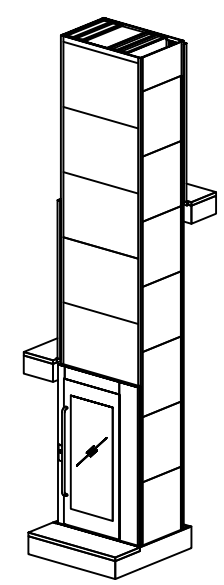
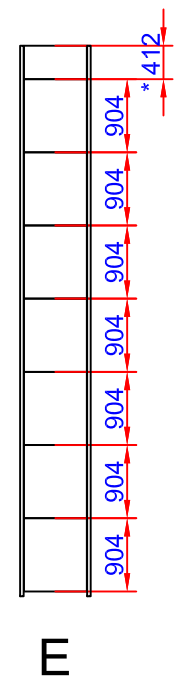
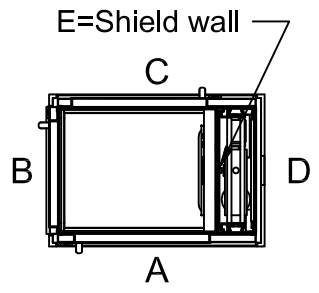


*To be adapted on site
**Customized panel

Positioning of machinery:



Options
 Frekv 1x230/240V 50-60Hz 16 A Soft
 Capacity: 300,00 kg

Approved by builder:



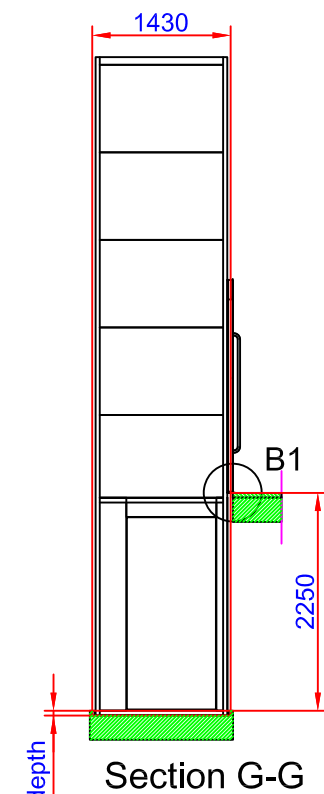
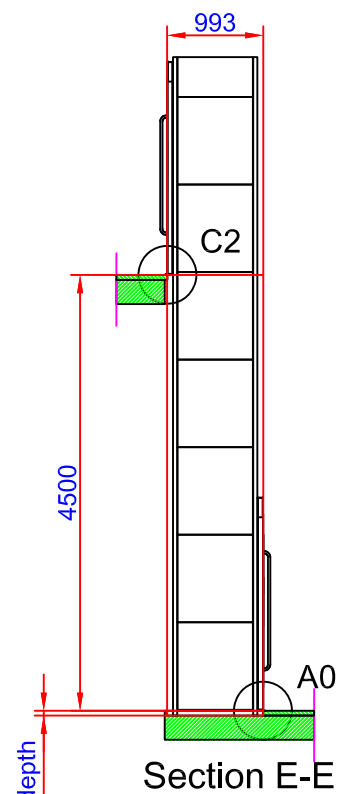
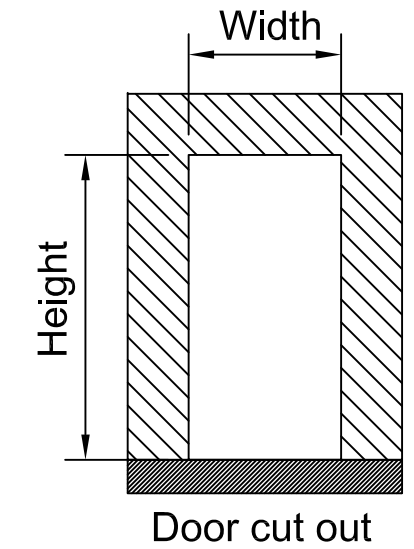
European view placement:

Tender no	Principal drawing		
Order no	A4 Mini - 1000*830		
Gen. Tolerances	Date	sheet	Scale:
SS-ISO 27681-1 m	2018-10-25	1 of 7	A3, 1:60

Shaft cutout sizes

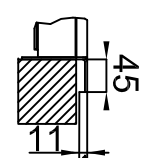
Lift unit installed within a shaft by others

Door front cutout sizes		
Landing	Width	Height
A 0	1030	2250
B 1	830	2250
C 2	1030	2250

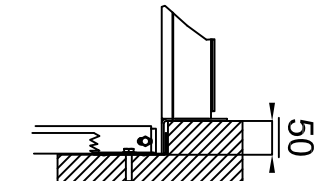


50 mm pit depth + 10 mm, - 0 mm.
Bottom surface must be flat

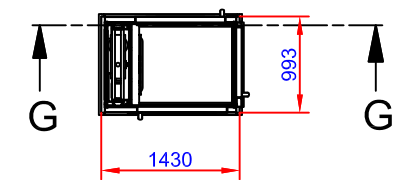
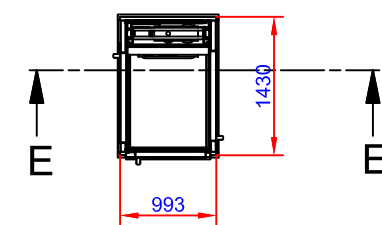
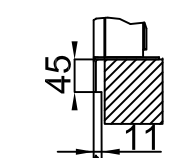
C2 (1:10)



A0 (1:10)



B1 (1:10)



Approved by builder:



Tender no	Principal drawing		
Order no	A4 Mini - 1000*830		
Gen. Tolerances	Date	sheet	Scale:
SS-ISO 27681-1 m	2018-10-25	2 of 7	A3, 1:60

European view placement:

6 5 4 3 2 1

Loads sustained by shaft and platform
and fixing points bottom frame

Recommended positioning of fixing points.
Loads per fixing point, F=250 N

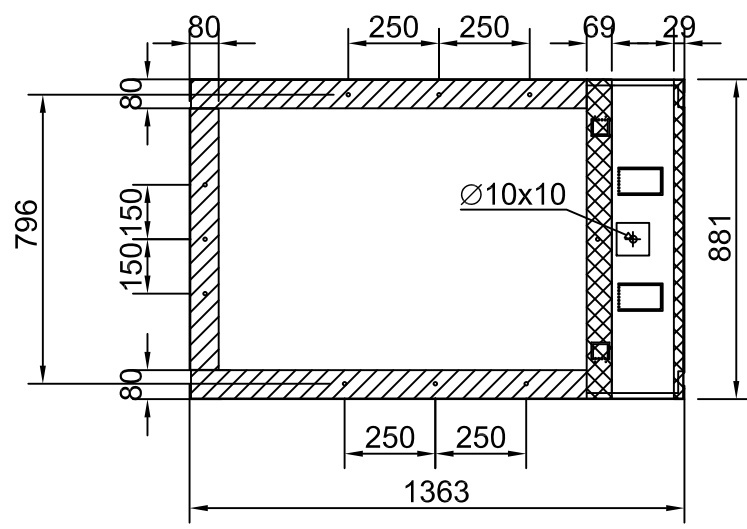
A (1:5)



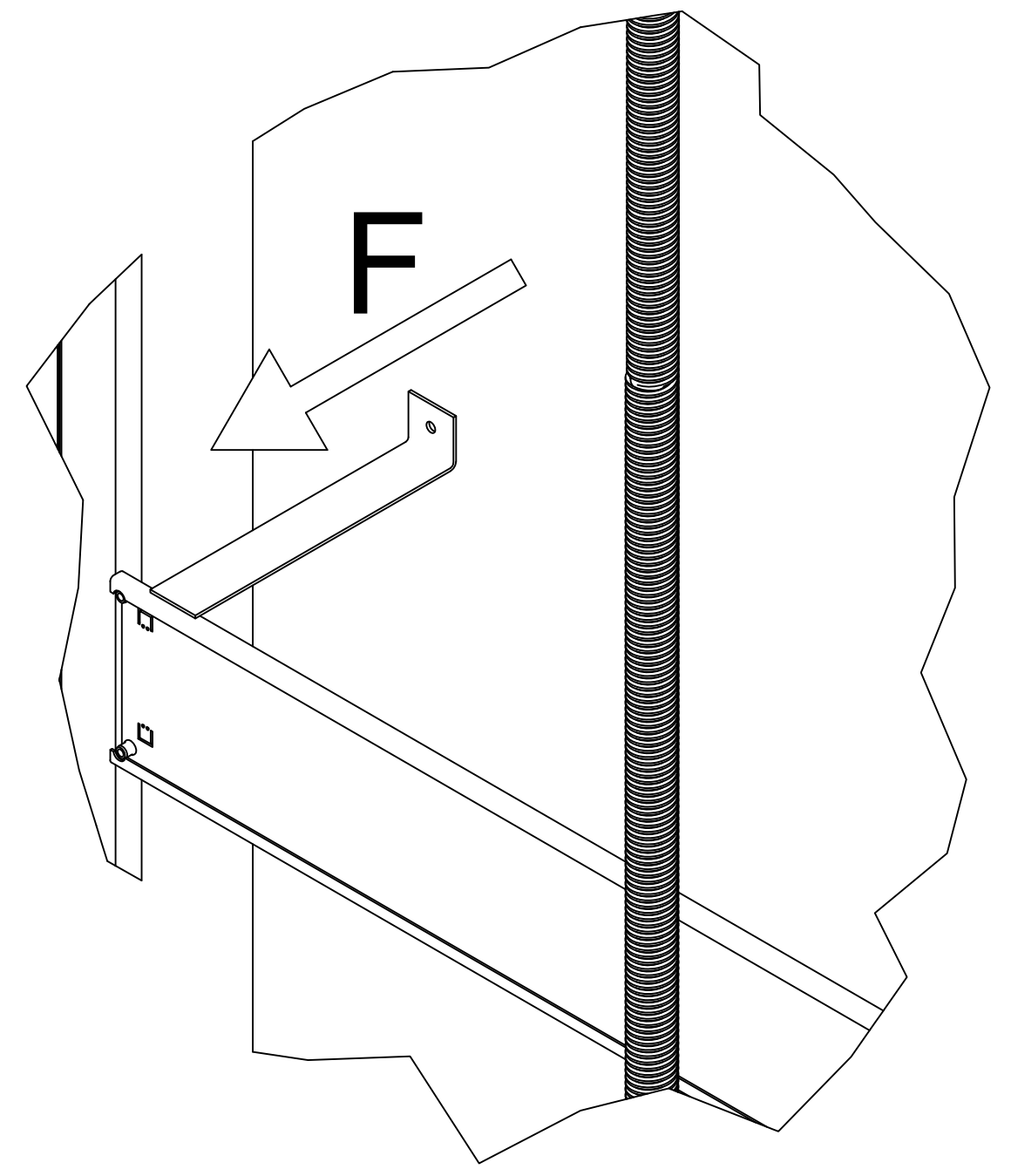
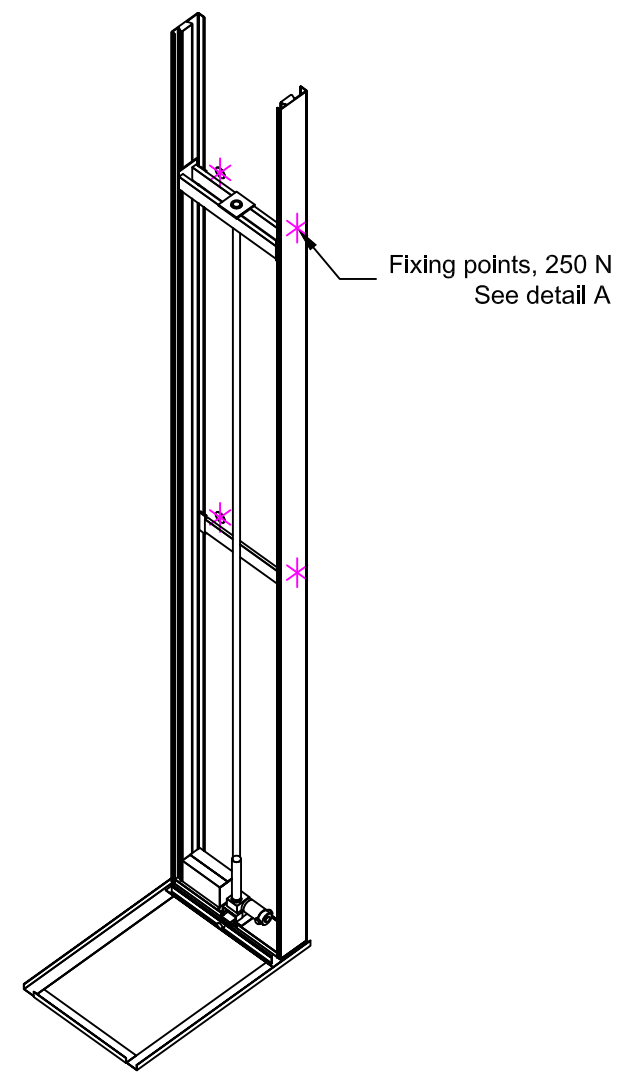
L section force:
7,5 kN
L section load:
24,59 kN/m²



Mast force: 8,32 kN
Mast load: 67,1 kN/m²



Scale: 1:20



D
C
B
A

D
C
B
A

Approved by builder: _____		Tender no		Principal drawing A4 Mini - 1000*830 Loads and forces	
		Order no			
European view placement:		Gen. Tolerances SS-ISO 27681-1 m	Date 2018-10-25	sheet 3 of 7	Scale: A3, 1:60

6 5 4 3 2 1