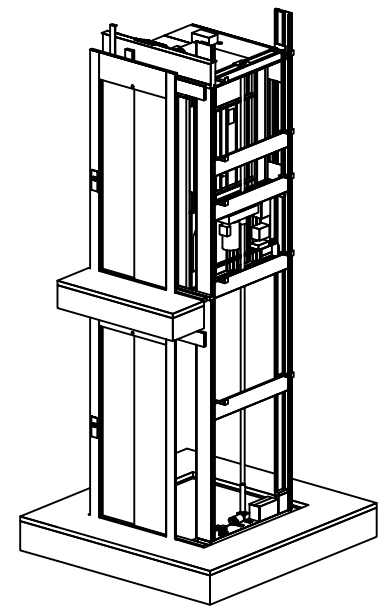
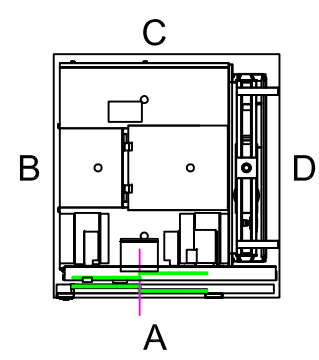


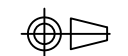
Positioning of machinery:



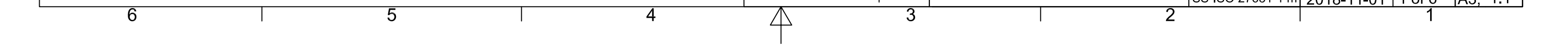
Options
 4 kW Frekv 3x400V 50-60 Hz Soft
 Capacity: 400,00 kg

Approved by
 builder:

European view placement:



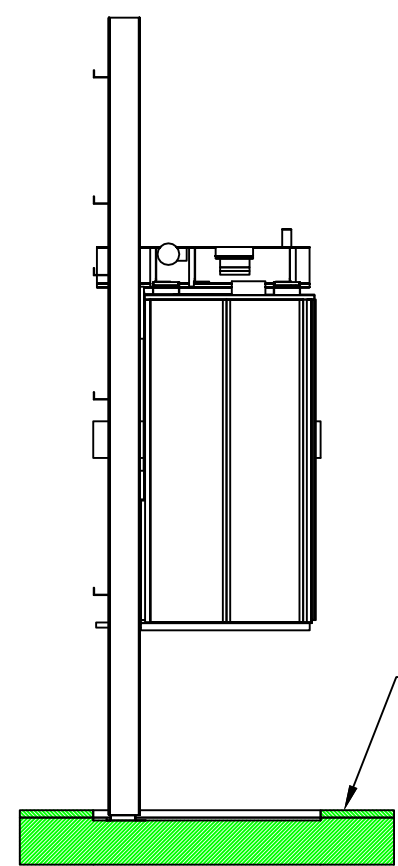
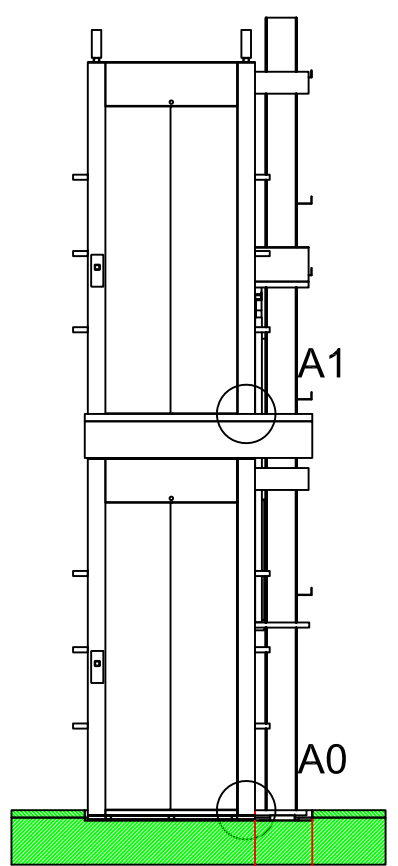
| | | | |
|------------------|-----------------------|--------|---------|
| Tender no | Principal drawing | | |
| Order no | A4 Cabina - 1100*1400 | | |
| Gen. Tolerances | Date | 1 of 6 | Scale: |
| SS-ISO 27681-1 m | 2018-11-01 | | A3, 1:1 |



Shaft cutout sizes

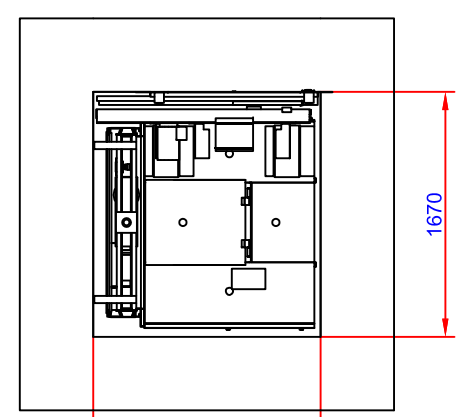
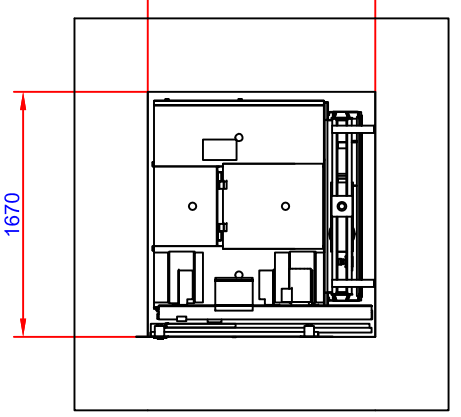
Scale: 1:50

Scale: 1:50

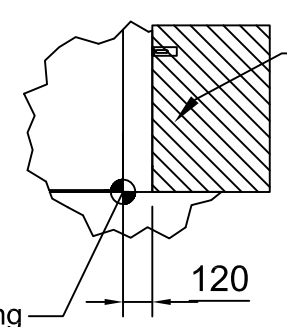


390 inside shaft, mast side to door cut out

70 mm pit depth + 10 mm, - 0 mm.
Bottom surface must be flat



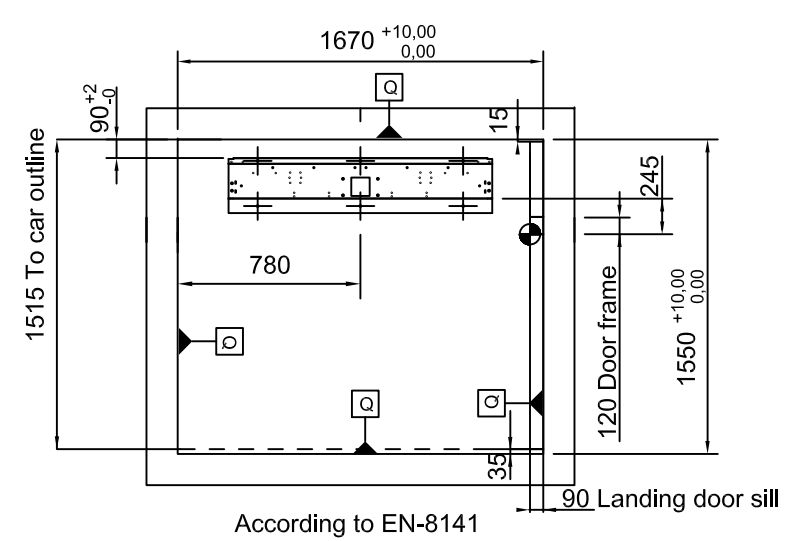
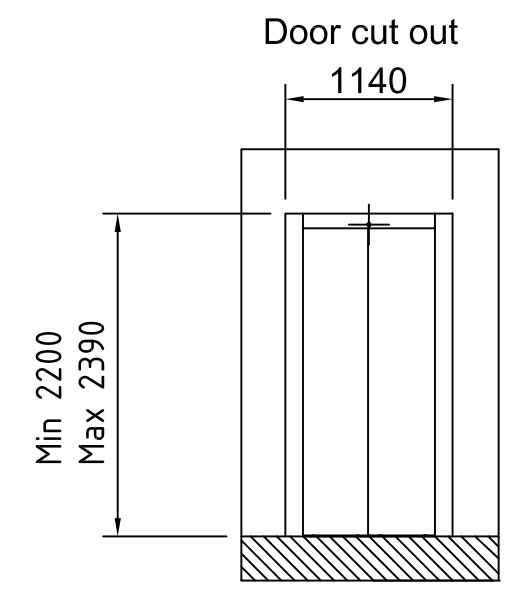
A0,1 (1:30)



Door clear opening

Wall supplied by contractor

⊥|m|Q




According to EN-8141

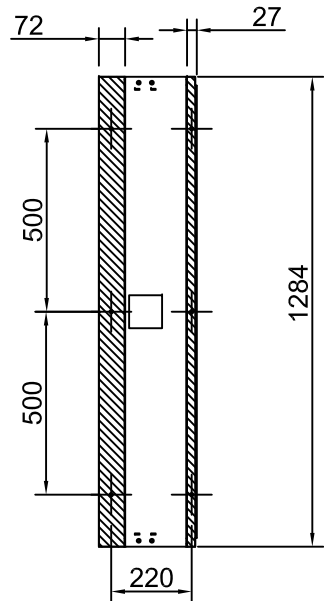
| | | | | | |
|-----------------------------------|--|-------------------------------------|---|--------|-------------------|
| Approved by builder: _____ | | Tender no | Principal drawing A4 Cabina - 1100*1400 Cut out sizes | | |
| | | Order no | | | |
| European view placement: | | Gen. Tolerances SS-ISO 27681-1 m | Date 2018-11-01 | 2 of 6 | Scale: A3, 1:1 |

Loads sustained by shaft and platform
and fixing points bottom frame

Recommended positioning of fixing points. Note: general view

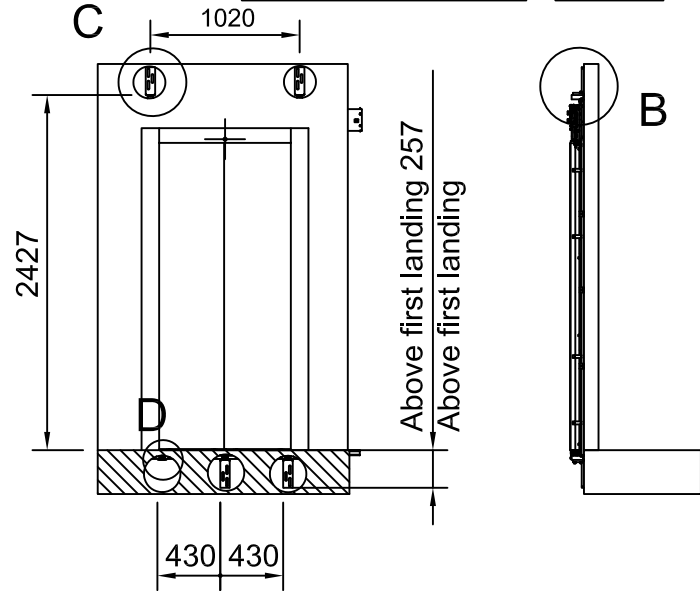
Loads per fixing point, $F=1250\text{ N}$

 Pit Load: 110kN/m^2

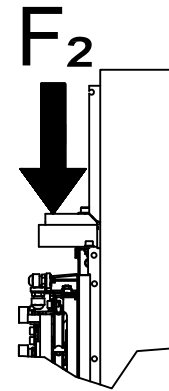
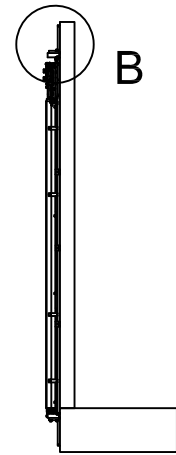


Scale: 1:20

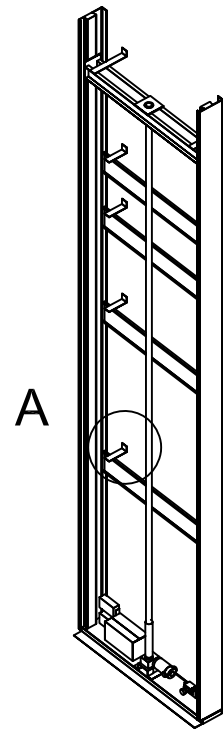
Landing door fixing points.
Number of fixing points: 5
Load per fixing point: $F_2=150\text{ N}$



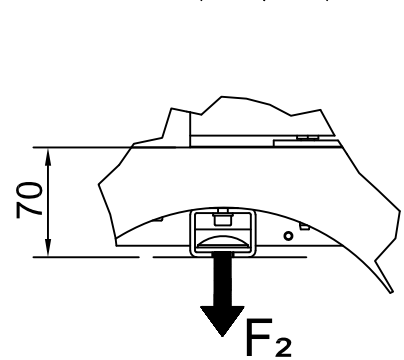
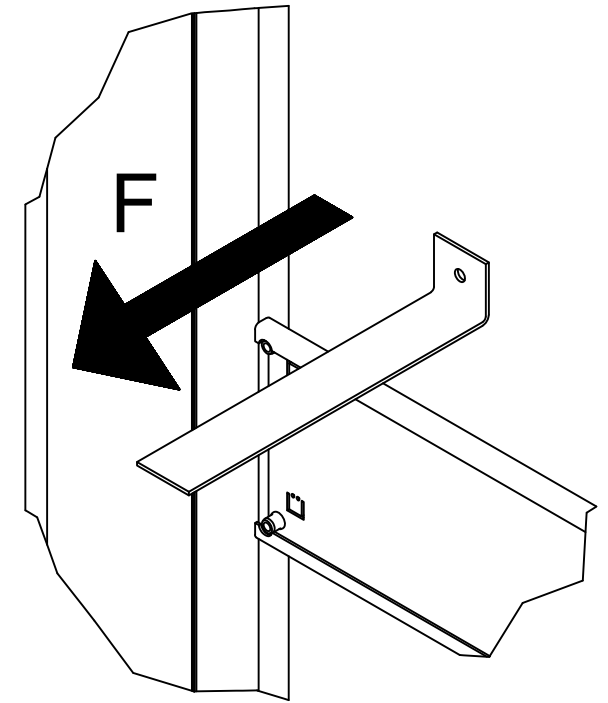
B (1:10)



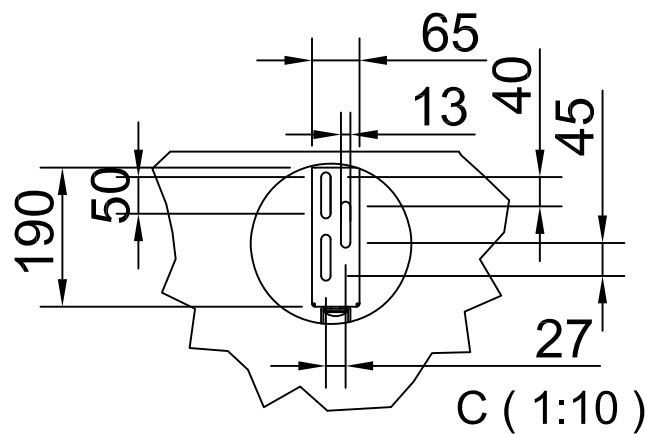
Scale: 1:50



A (1:5)



D (1:10)



C (1:10)

Approved by
builder:

European view placement:



KALEA
LIFTS

Tender no

Order no

Gen. Tolerances

SS-ISO 27681-1 m

Principal drawing
A4 Cabina - 1100*1400
Loads and forces

Date

2018-11-01

3 of 6

Scale:

A3, 1:1